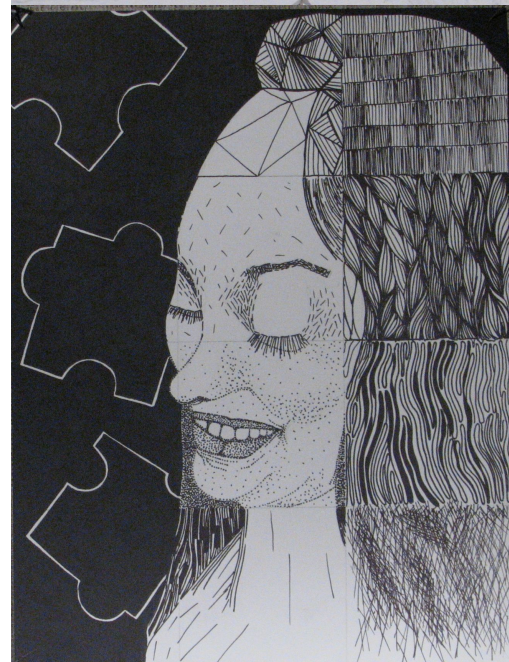
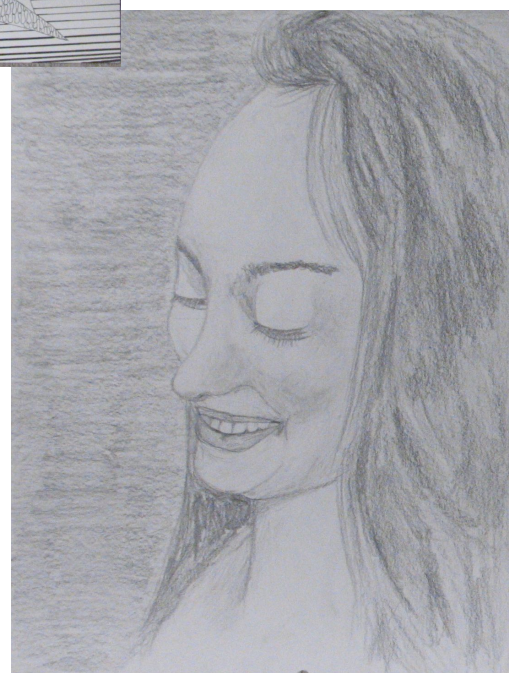




## Media and Methods

## Pencil and Graphic Grid Portraits





Students first drew a developed and shaded portrait of themselves or someone they knew from a photograph. They then translated the portrait to Sharpie marker in order to practice graphic interpretations of a range of value. The recommended, demonstrated format was a traditional grid, but many students had ideas and inspiration that led them in different, individualized directions.